

## PRECIDIUM™ MTI Bus Floor

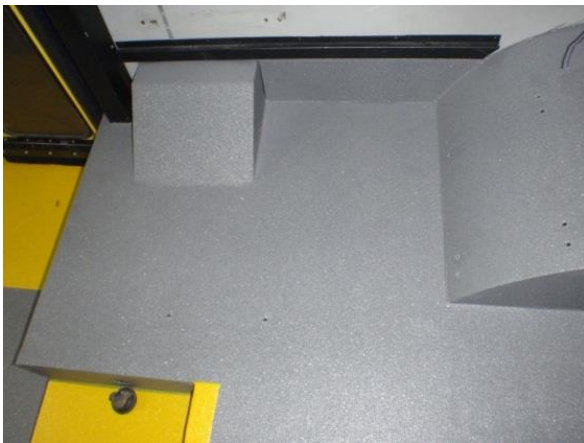
### DESCRIPTION

**PRECIDIUM™ MTI Bus Floor** is a 100% solids, high-performance, two-component proprietary elastomer, providing a seamless, durable and attractive flooring that will last the life-time of the bus. The productive installation of this flooring is unmatched.

### PROPERTIES\*

Set Time	2 minutes
Shore D Hardness	37D
Tensile Strength	ASTM D412: 2500 psi
Elongation	ASTM D412: 225%
Tear Strength	ASTM D624A: 450 pli
Weight	1.5 kg/m <sup>2</sup> (60 mils thickness)
Taber Abrasion	ASTM D4060: 12 mg CS-17 240 mg H-18 (1000 revolutions; 1000g weight)

\*Approximate values only. Should not be considered specifications. This data sheet is intended for general information only.



### APPLICATION

For application use a regulated high-pressure proportioner (1:1) and spray gun system capable of producing a minimum of 2000-2500 psi (ie: Graco EXP2/HXP2/HXP3). Thoroughly mix RESIN for 45 to 60 minutes prior to use. To ensure adequate mixing is achieved, a Dynamix Series MMX Drum Mixer or similar is recommended. This will re-suspend and maintain product uniformity.

#### Mixer Specifications:

- Drive: Air Motor 3 hp (½ hp @ 300rpm)
- Mount: 2" Bung Mount (Aluminum)
- Shaft: Shaft Ass. ¾" x 28" Long Shaft (304 SS)
- Two Impellers: Impeller Assembly Fixed 8" Diameter

Preheating RESIN may be necessary to achieve uniform mix. Check that no residue is left on the bottom of the drum after mixing to ensure performance of cured product. This is achieved using a band heater or recirculating the material through the machine with the heaters set to 140° F. Target RESIN temperature before spraying is 100° F or greater.

#### Recommended Heat Settings:

Line/Pre-Heaters	150°-160° F
Hose Heat	150°-160° F

Recommended Pressure Settings: 2000-2500 psi

Recommended Gun: Fusion AP

Recommended Tip: AR4242/AW3939

Apply only to properly prepared substrate. Apply first coat at less than 10 mil and allow to become tack free before continuing. Apply following coats at 20 mil per coat and allow surface to become tack free before application of subsequent coats. Spray with uniform motion and allow 50 to 75% overlap.

### FEATURES

- Seamless floor
- Zero VOC
- Phthalate free
- Excellent abrasion and impact resistance
- Flexible and waterproof
- Lightweight
- Range of colors available

### STORAGE

Store in a cool and dry place for product integrity. Store in tightly sealed containers to protect from moisture contamination and foreign materials.

#### AVAILABILITY

**PRECIDIUM™ MTI Bus Floor** is packaged in 200 Liter drums. (400 Liters/set).

#### PRODUCT SAFETY

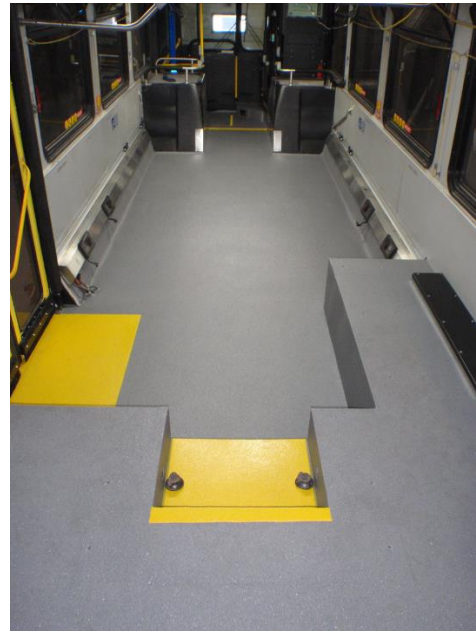
An SDS is available upon request.

#### ADVANTAGES FOR BUS OEM and REFURBISHERS

Unlike traditional transit floor coverings, **PRECIDIUM™ MTI Bus Floor** is specifically engineered to meet the needs of the bus industry. It is an innovative, light-weight, seamless floor covering that allows Bus OEMs and Refurbishers to deliver significant benefits to transit properties.

#### PRODUCT COMPARISON

Excellent abrasion and adhesion properties result in floors that won't wear quickly or delaminate under even the toughest weather conditions. Floors look newer, longer.



Product Attribute	PRECIDIUM™ MTI Bus	Vinyl	Rubber
Hardness Shore D	37D	55D-60D	45D-50D
Tensile Strength (psi) ASTM D412	2500 psi	1352 psi	1017 psi
Elongation (%) ASTM D412	225%	0.71%	85%
Tear Strength (pli) ASTM D624A	450 pli	296 pli	189 pli
Slip Resistance ASTM D2047	≥ 0.6	≥ 0.6	≥ 0.6
Taber Abrasion CS-17 ASTM D4060	12 mg loss	42 mg loss	256 mg loss
Taber Abrasion H-18 ASTM D4060	240 mg loss	178 mg loss	926 mg loss
Wear Layer	100% Top to Bottom	0.8mm-1.4mm	100% Top to Bottom
Density (g/cm <sup>3</sup> )	0.9999	1.285	1.6
Thickness (mils)	60 mils	106 mils	113 mils
Weight (lbs./feet <sup>2</sup> )	0.3	0.71	0.94
Weight (lbs./yard <sup>2</sup> )	2.81	6.38	8.46
Chemical Resistance	Excellent	Excellent	Excellent
Stain Resistance	Excellent	Excellent	Excellent

<b>Product Attribute</b>	<b>Benefit to Transit Property</b>
<b>Spray Applied Coating</b> Creates a seamless and impermeable membrane.	Prevents water and dirt from penetrating the surface and causing adhesion failure or corrosion of the substrate.
<b>Easy to Maintain</b> Excellent stain resistance – including grease and oil.	The floors seamless nature means dirt can't collect between panels, making it easy to clean and maintain for a pleasant commuter experience.
<b>Quick and Easy to Install</b> Productive spray-applied installation process.	Time-consuming tasks of molding, fitting and handling materials are completely eliminated to save cost and minimize down time.
<b>Extremely Durable</b> Exceptional abrasion and impact resistance.	Extends the life of the floor, decreases maintenance costs and won't show the wear and tear from thousands of daily commuters.
<b>High Performance</b> Proprietary elastomer technology.	Combines a soft, comfortable and safe feel underfoot with aesthetically pleasing design, providing a high level of commuter satisfaction.